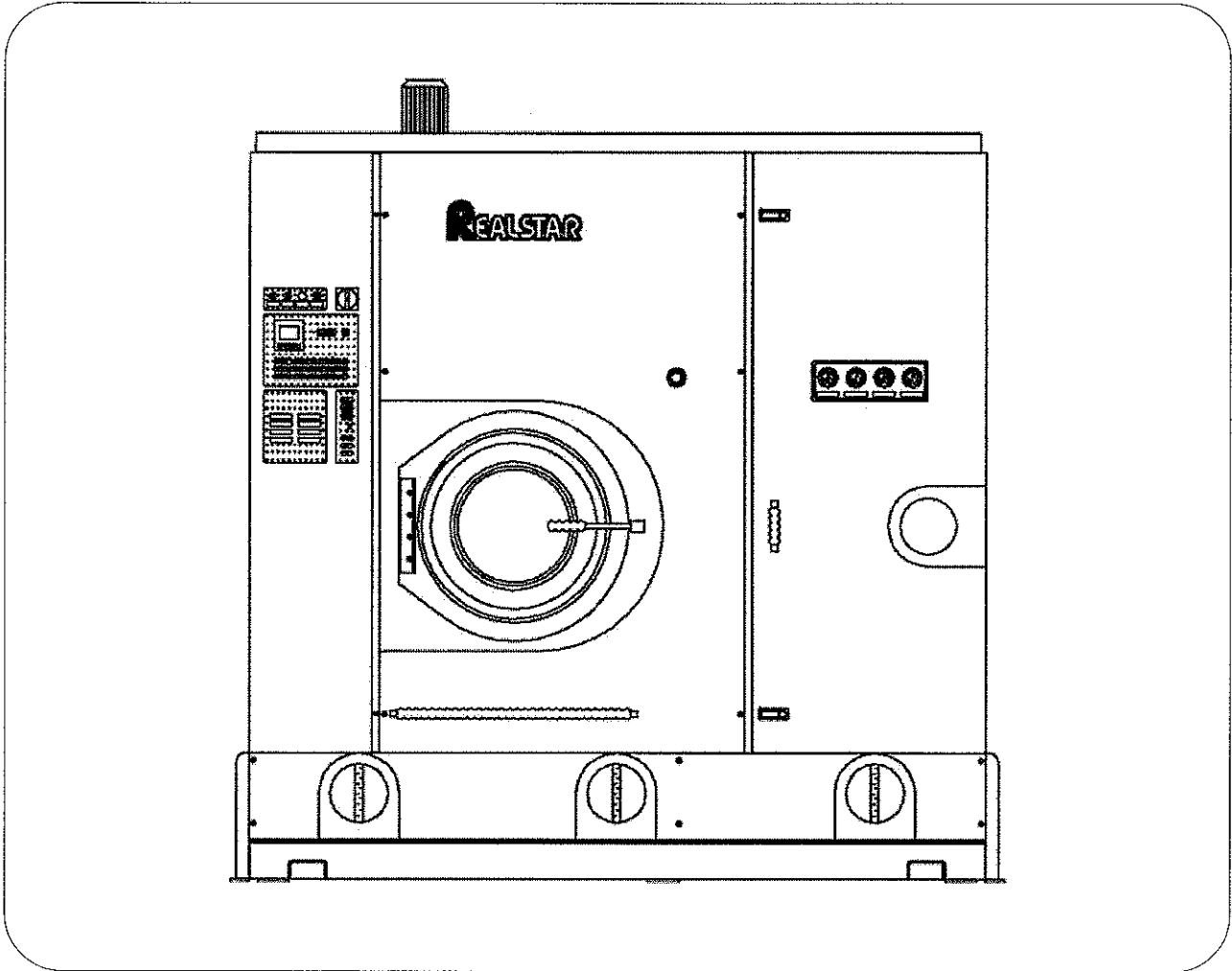




MACCHINE LAVASECCO - DRY CLEANING MACHINES

TECHNICAL INFORMATION



KM803

WORKING MACHINE WITH SOLVENT:	HYDROCARBON	
MACHINE CAPACITY (RATIO 1:20)	Lbs	90

BASKET

Diameter	inches	47.3
Depth	inches	28
Volume	cu-ft	28.3
Wash speed	rpm	12 ÷ 50
Extract speed	rpm	300 ÷ 450
Door opening	inches	23.7

SOLVENT TANKS

Useful volume tank 1	gal	63.4
Useful volume tank 2	gal	63.4
Useful volume tank 3	gal	87.2
FLOOR SAFETY TANK CAPACITY	gal	145

DESTILLATOR

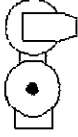
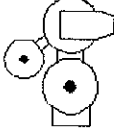
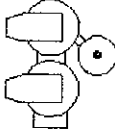
Useful volume at half inspection	gal	95
Total volume	gal	120

ELECTRIC POWER

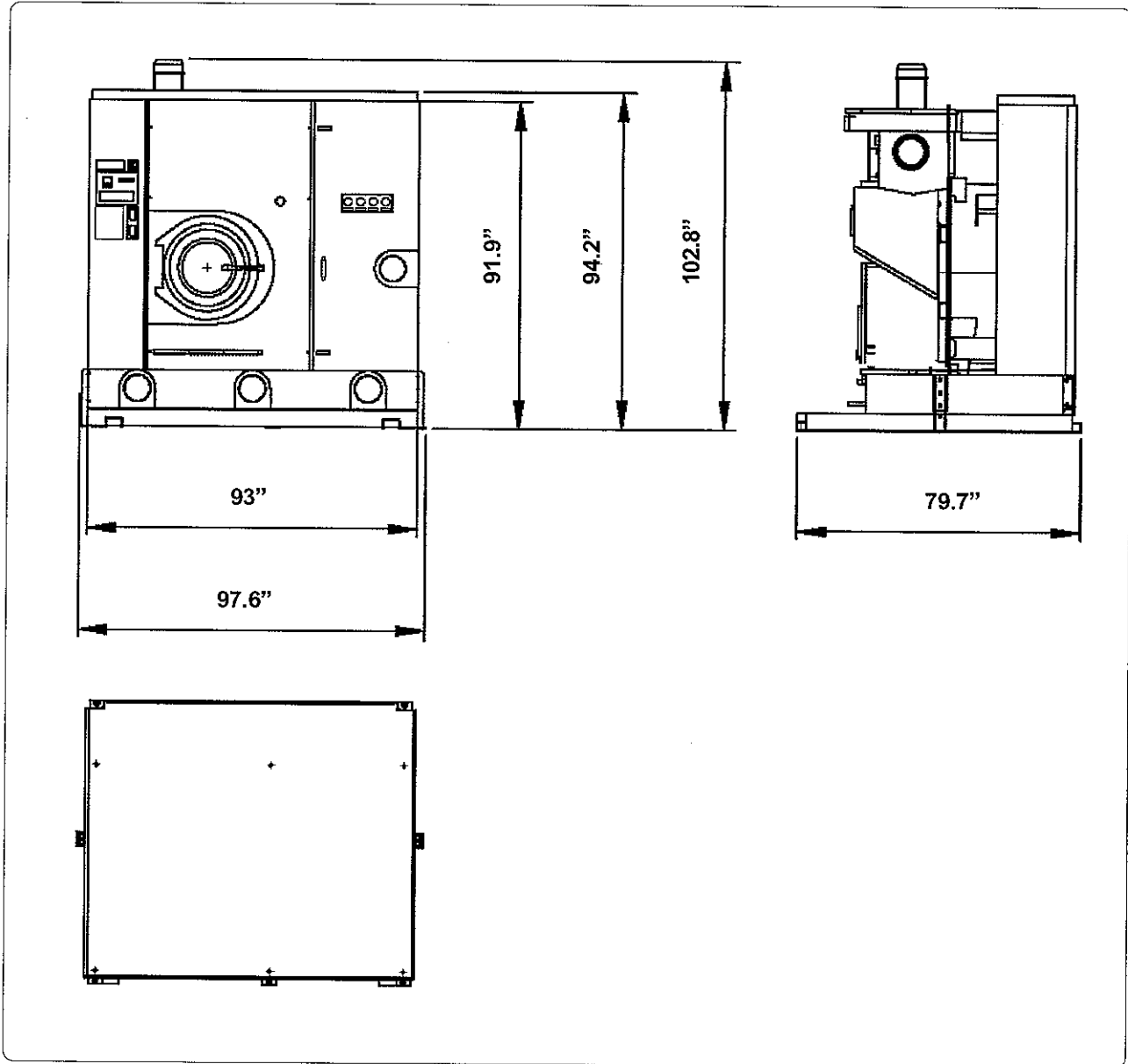
(220 V - 60 Hz)

Wash motor - Extract motor	Hp	10.1	Kw	7.5
Solvent pump motor	Hp	1.5	Kw	1.1
Fan motor	Hp	5.5	Kw	4.1
Refrigerator compressor MT81	Hp	6.5	Kw	4.85
Nylon filter motor	Hp	2	Kw	1.5
Vacuum pump motor	Hp	3	Kw	2.2
Air motor compressor	Hp	0.5	Kw	0.37

NOTE: Acoustic emission level of the machine is lower than 70 dB (A)

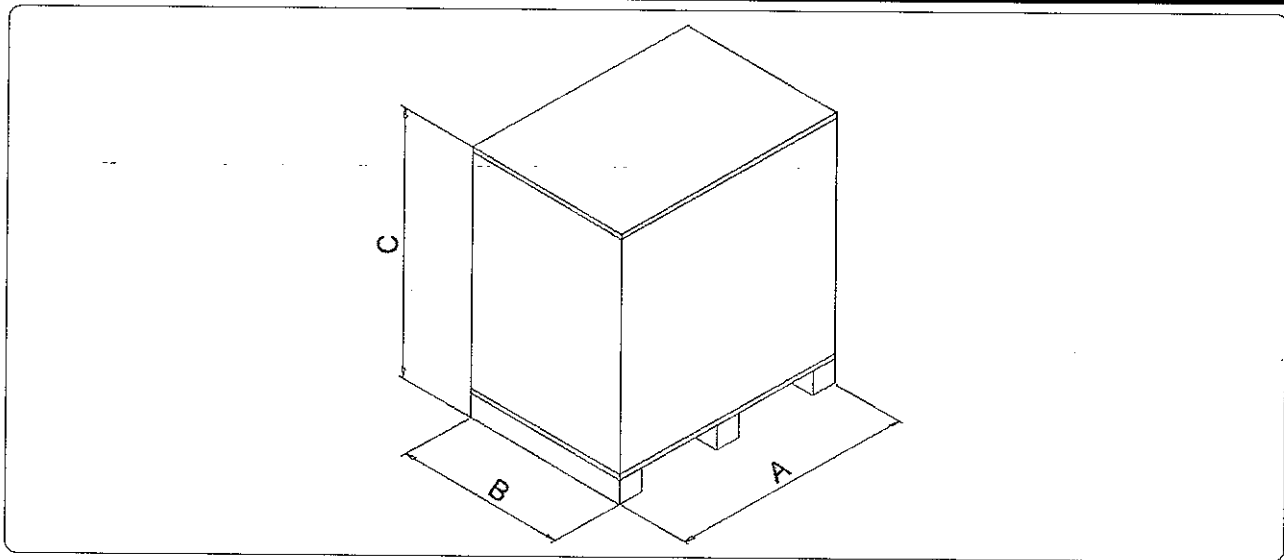
FILTRATION AVAILABLE IN THIS MODEL			
Version - 04	ONE NYLON FILTER AND ONE CARTRIDGE -KR		
	Volume nylon filter housing	gal	26.4
	Nylon filter area	ft ²	84
	Filter disks	nr	52
	KR Decolorating housing volume	gal	27.7
	KR Decolorating filter	ft ²	112
	KR cartridges quantity	nr	4
Version - 10	ONE NYLON ONE CARTRIDGE -KR ONE DECOLORATING PR		
	Volume nylon filter	gal	26.4
	Nylon filter area	ft ²	84
	Filter disks	nr	52
	KR Decolorating housing volume	gal	27.7
	KR Decolorating filter area	ft ²	112
	KR Decolorating cartridges	nr	4
	PR - Deco filter volume	gal	6.6
	Tubes	nr	1
	PR - Cartridge quantity	nr	2
	Decolorating carbon quantity	Lbs	8.8
Version - 11	TWO NYLON FILTER AND ONE DECOLORATING FILTER		
	Volume nylon filter housing	gal	26.4 x 2 = 52.8
	Nylon filter area	ft ²	84 x 2 = 168
	Filter disks	nr	52 x 2 = 104
	PR - Deco filter volume	gal	6.6
	Tubes	nr	1
	PR - Cartridge quantity	nr	2
	Decolorating carbon quantity	Lbs	8.8

DIMENSIONS AND WEIGHTS



CHARGES		
Empty machine weight	Lbs	6503
Machine weight with solvent	Lbs	8223
Static charge on the floor with solvent	Lbs/ft ²	160
Dynamic charge on the floor (+10%)	Lbs/ft ²	255

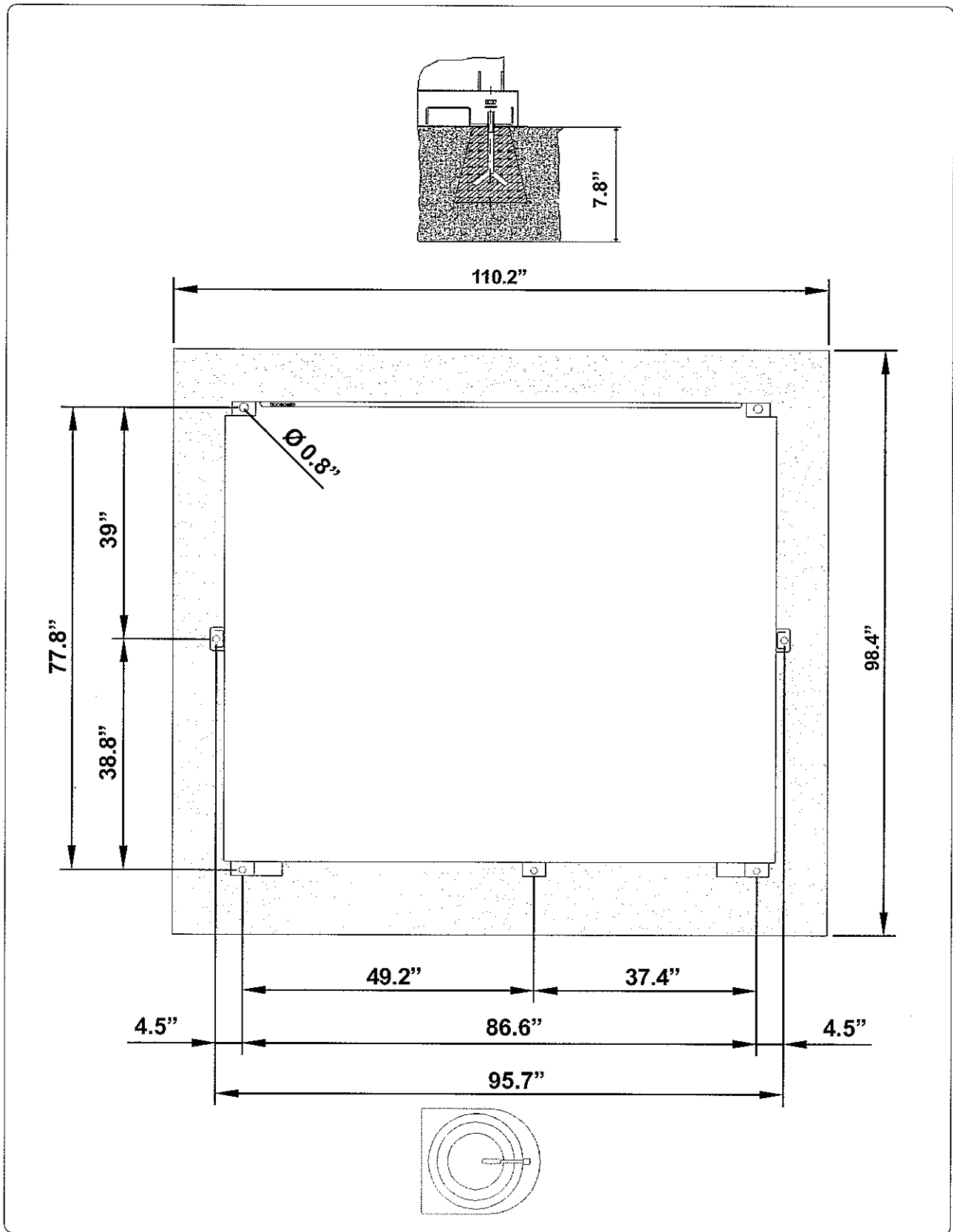
PACKAGED MACHINE DIMENSIONS AND WEIGHTS



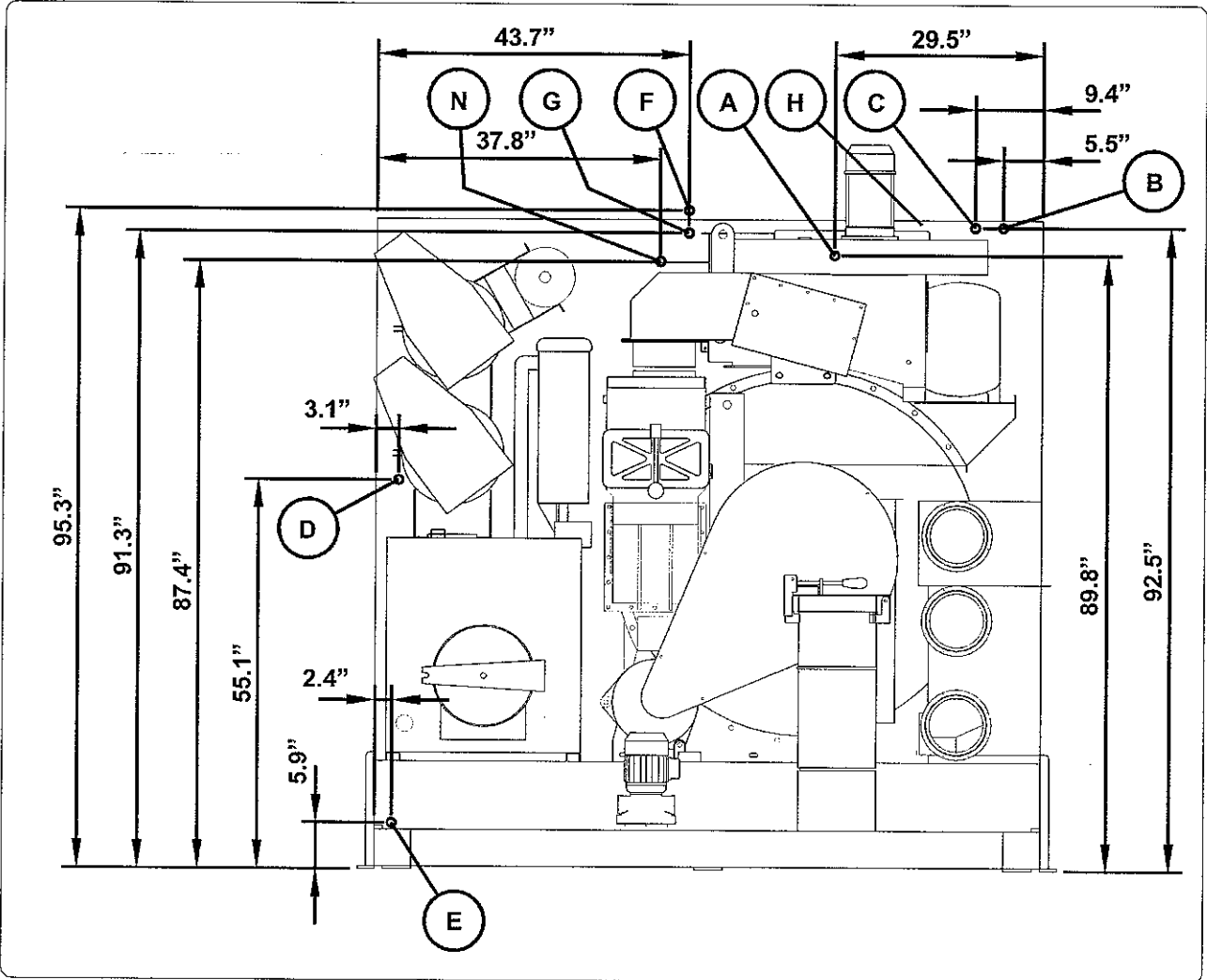
PACKAGED MACHINE DIMENSIONS				
Machine type		Carton	Wooden cage	Wooden case
KM803	A		inches 101.6"	
	B		inches 87.8"	
	C		inches 97.6"	

PACKAGED MACHINE WEIGHTS			
Machine type	Carton	Wooden cage	Wooden case
KM803		Lbs 7341	

FIXING POINTS



CONNECTIONS



A	Compressed air inlet	Ø 6 mm
B	Water inlet	Ø 1"
C	Water outlet	Ø 1"
D	Steam still inlet	Ø 1/2"
E	Condensate still outlet	Ø 1/2"
F	Steam heater inlet	Ø 1/2"
G	Condensate heater outlet	Ø 1/2"
H	Electric connection	
N	Nitrogen feeding connection (N ₂)	

SOLVENT TYPE		HYDROCARBON		
NECESSARY QUANTITY OF SOLVENT TO FILL THE MACHINE				
Machine Version - 04	gal	276	Lbs	1775
Machine Version - 10	gal	283	Lbs	1819
Machine Version - 11	gal	281	Lbs	1808

INFORMATION FOR THE ELECTRICAL CONNECTIONS (220 V - 60 Hz)				
ELECTRIC Version	Kw	-	Amp	-
STEAM Version	Kw	20	Amp	84.5

GENERAL INFORMATION		
Required water capacity	gal/min	3
Required water pressure	psi	40 ÷ 70
Required water temperature	°F	65° ÷ 70°
Required air pressure	psi	100 ÷ 115
Required steam pressure (Steam Version)	psi	55 ÷ 70
Required steam availability (Steam Version)	Lbs/h	132

