

TECHNICAL INFORMATION

WORKING MACHINE WITH SOLVENT		HYDROCARBON
MACHINE CAPACITY		15 Kg 35 lbs

BASKET		
Diameter	800 mm	31.5 inches
Depth	560 mm	22 inches
Volume	285 Lt	10.1 cu.ft
Wash speed	20 ÷ 55 rpm	
Extract speed	300 ÷ 520 rpm	
Door opening	500 mm	20 inches


SOLVENT TANKS		
Useful volume tank 1	105 Lt	28 gal
Useful volume tank 2	105 Lt	28 gal
Useful volume tank 3	-	-
FLOOR SAFETY TANK CAPACITY	200 Lt	52.8 gal


DECANTER FILTER		
Decanter filter	36 Lt	9.5 gal

ELECTRIC POWER				
Wash - Extract (With Inverter)	*0.8÷4 Hp	*0.6÷3 Kw	*0.8÷4 Hp	*0.6÷3 Kw
Solvent pump motor 1	0.75 Hp	0.55 Kw	0.75 Hp	0.55 Kw
Solvent pump motor 2	0.75 Hp	0.55 Kw	0.75 Hp	0.55 Kw
Fan motor	2 Hp	1.5 Kw	2 Hp	1.5 Kw
Refrigerator compressor	3.25 Hp	2.5 Kw	3.25 Hp	2.5 Kw
Nylon filter motor	0.75 Hp	0.55 Kw	0.75 Hp	0.55 Kw
Remote Condenser	0.21 Hp	0.16 Kw	0.21 Hp	0.16 Kw
Air motor compressor (optional)	0.5 Hp	0.37 Kw	0.5 Hp	0.37 Kw
		400 V - 50HZ	220 V - 60HZ	

* POWER CHANGES ACCORDINGLY TO THE USE OF THE MACHINE

NOTE: Acoustic emission level of the machine is lower than 70 dB (A)

ONE NYLON FILTER AND ONE LARGE CARTRIDGE - KR			Cartridges quantity KR	nr 2	
Area large cartridge KR	2.6x2=5.2 m²		28x2=56 ft²	55 Lt	14.5 gal
Vol. large cartridge housing KR			26 nr		
Filter disks					
Nylon filter area	3.9 m²		42 ft²		
Volume nylon filter housing	55 Lt		14.5 gal		

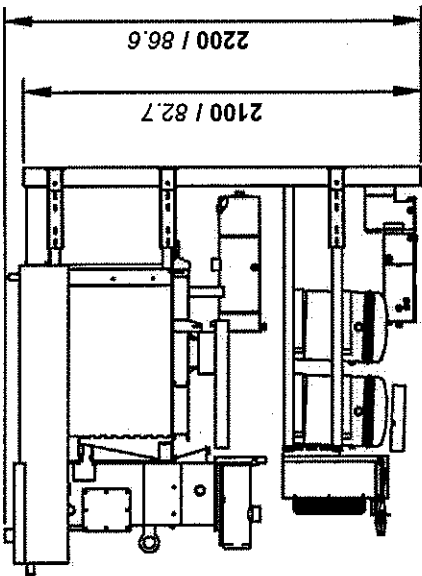
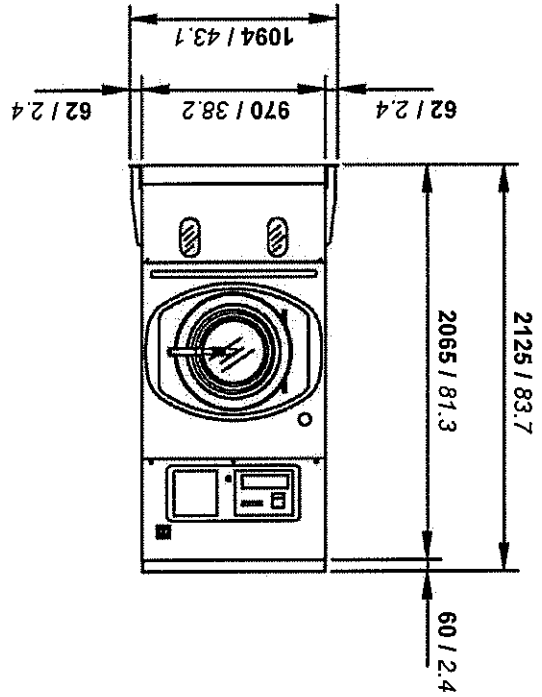
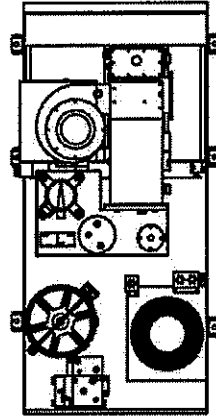
ONE NYLON FILTER			Filter disks	26 nr	
Nylon filter area	3.9 m²		42 ft²		
Volume nylon filter housing	55 Lt		14.5 gal		

FILTRATION AVAILABLE IN THIS MODEL

TECHNICAL INFORMATION

CHARGES - STANDARD VERSION		
Empty machine weight	1070 Kg	2359 Lbs
Machine weight with solvent	1316 Kg	2901 Lbs
Static charge on the floor with solvent	646 Kg/m ²	132 Lbs/ft ²
Dynamic charge on the floor (+10%)	1010 Kg/m ²	207 Lbs/ft ²

mm / inches

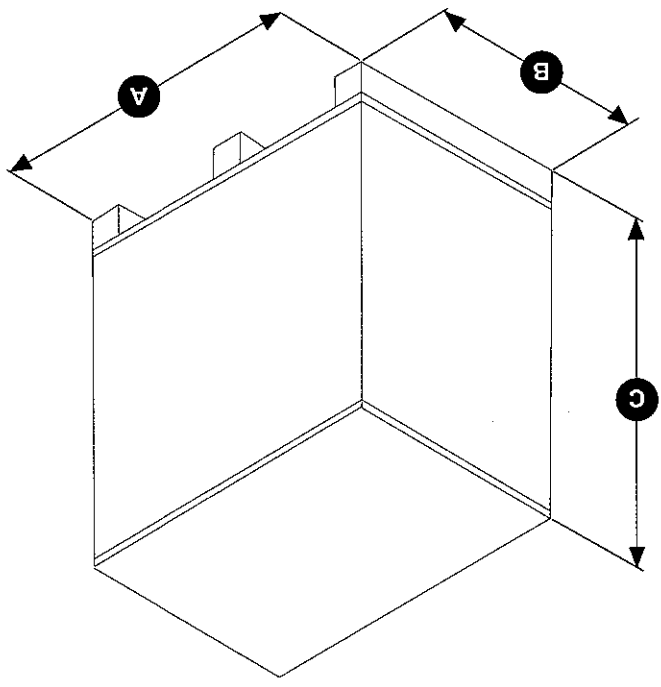


DIMENSIONS AND WEIGHTS

TECHNICAL INFORMATION

PACKAGED MACHINE WEIGHTS					
Machine type	Carton	Wooden cage	Wooden case		
Standard	- Kg	- Lbs	- Kg	- Lbs	- Kg
					- Lbs

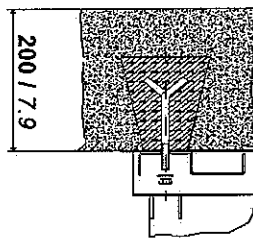
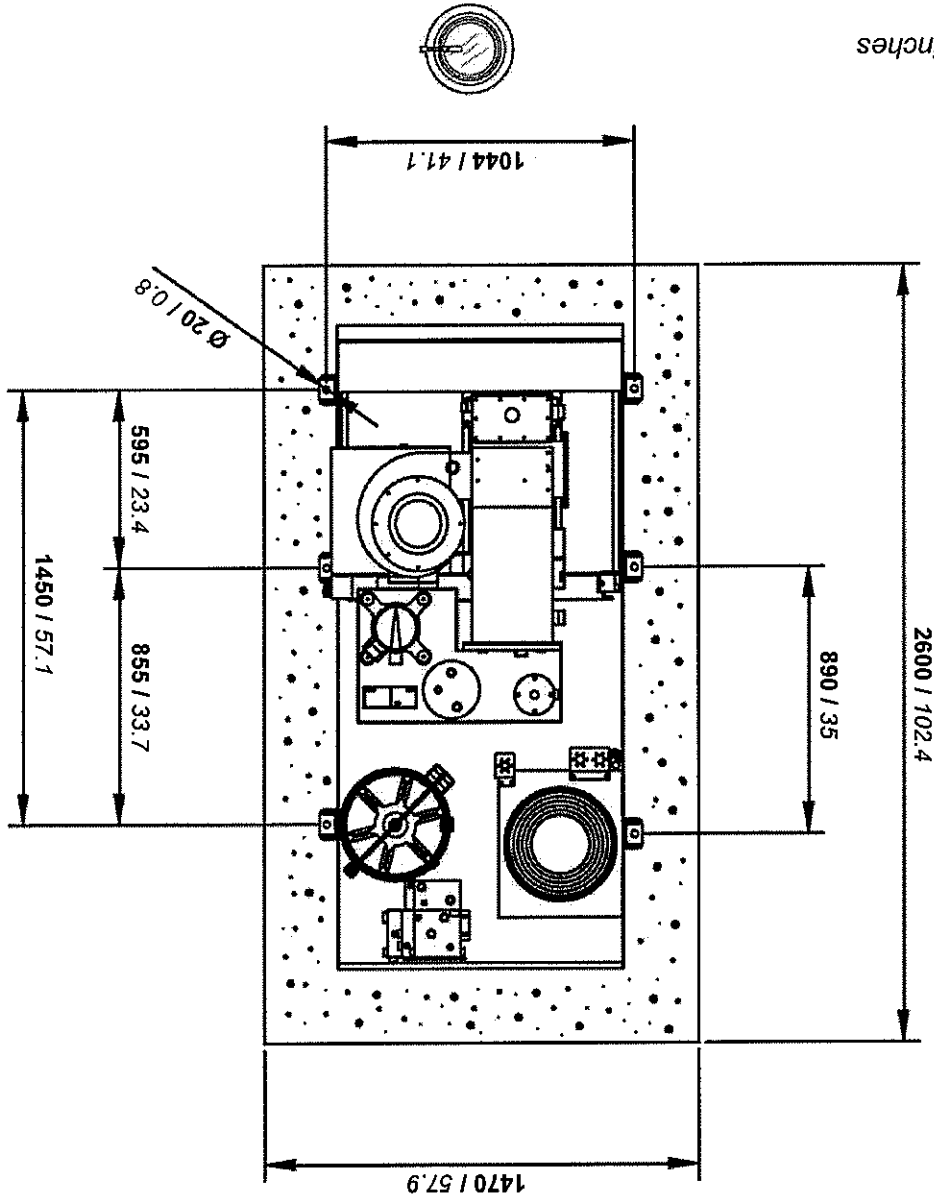
PACKAGED MACHINE DIMENSIONS					
Machine type	Carton	Wooden cage	Wooden case		
Standard	A	B	C		
	- mm	- mm	- mm	- inches	- inches
	- inches	- inches	- inches	- mm	- mm
	- mm	- mm	- mm	- inches	- inches



PACKAGED MACHINE DIMENSIONS AND WEIGHTS

TECHNICAL INFORMATION

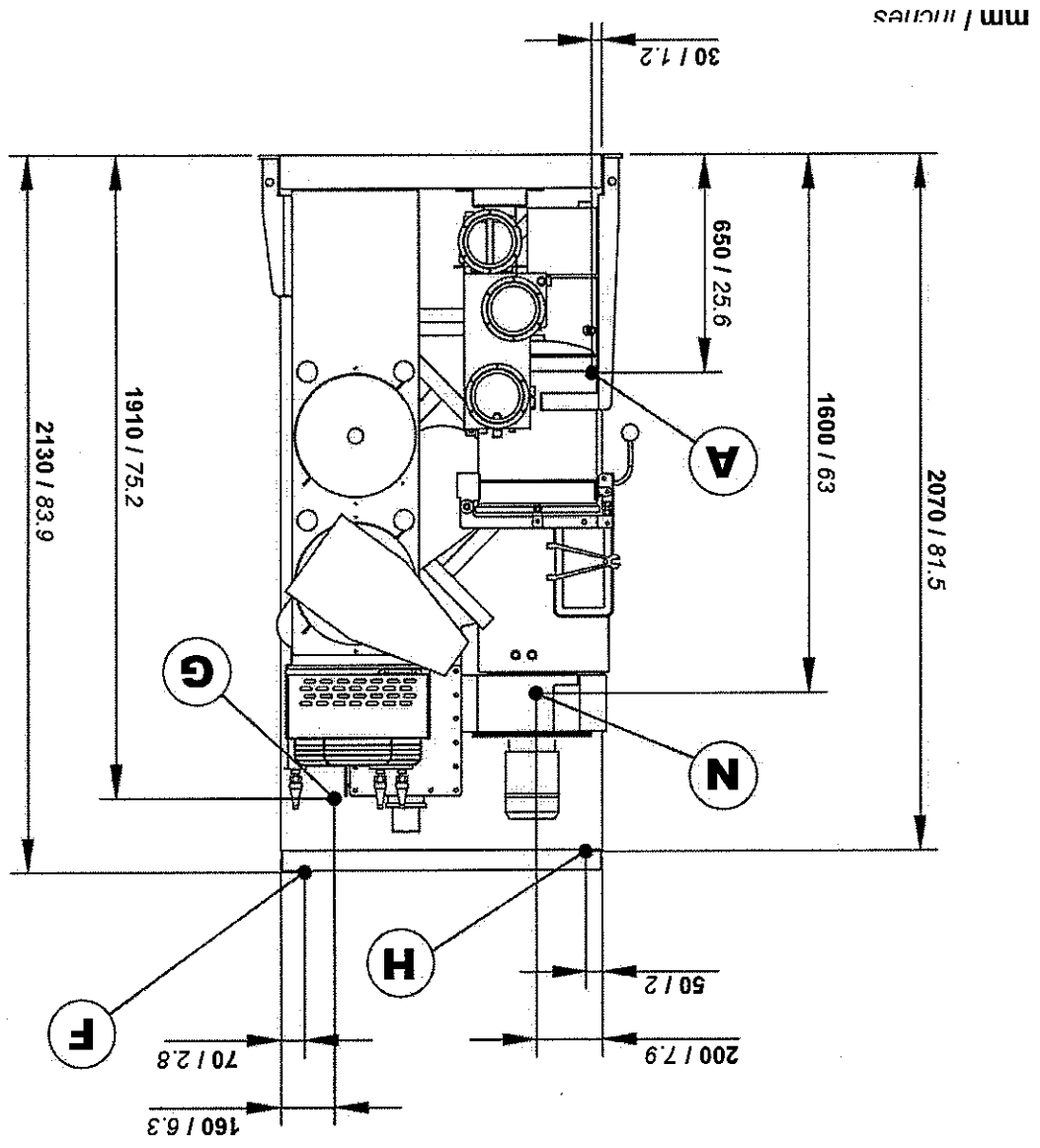
mm / inches



FIXING POINTS WITH FLOOR TANK

USEFUL INSTALLATION INFORMATION

Compressed air inlet		mm 6	Ø 1/4"
-	-	-	-
-	-	-	-
-	-	-	-
-	-	-	-
-	-	-	-
-	-	-	-
Steam heater inlet (Opt.)	Ø 1/2"	-	-
Condensate heater outlet (Opt.)	Ø 1/2"	-	-
Electric connection	-	-	-
Nitrogen feeding connection (N ₂)	-	-	-



CONNECTIONS

USEFUL INSTALLATION INFORMATION

All technical data are subject to change without notice.

GENERAL INFORMATION		
Required water capacity	Lt/min -	gal/min -
Required water pressure	bar -	psi -
Required water temperature	°C -	°F -
Required air pressure	bar 7 ÷ 8	psi 100 ÷ 115
Required steam pressure (Steam Version)	bar 4 ÷ 5	psi 55 ÷ 70
Required steam availability	Kg/h 15 ÷ 20	Lbs/h 33 ÷ 44

INFORMATION FOR THE ELECTRICAL CONNECTIONS		
(220 V - 60 Hz)		
STANDARD Version	6 Kw	25 Amp
Dissipated heat	- Kcal	

INFORMATION FOR THE ELECTRICAL CONNECTIONS		
(400 V - 50 Hz)		
STANDARD Version	6 Kw	15 Amp
Dissipated heat	- Kcal	

NECESSARY QUANTITY OF SOLVENT TO FILL THE MACHINE						
SOLVENT TYPE	HYDROCARBON	Machine version - 1 Nylon Filter	265 Lt	204 Kg	70 gal	450 Lbs
		Machine version - 1 Nylon Filter + 1 KR	320 Lt	246 Kg	85 gal	542 Lbs

USEFUL INSTALLATION INFORMATION