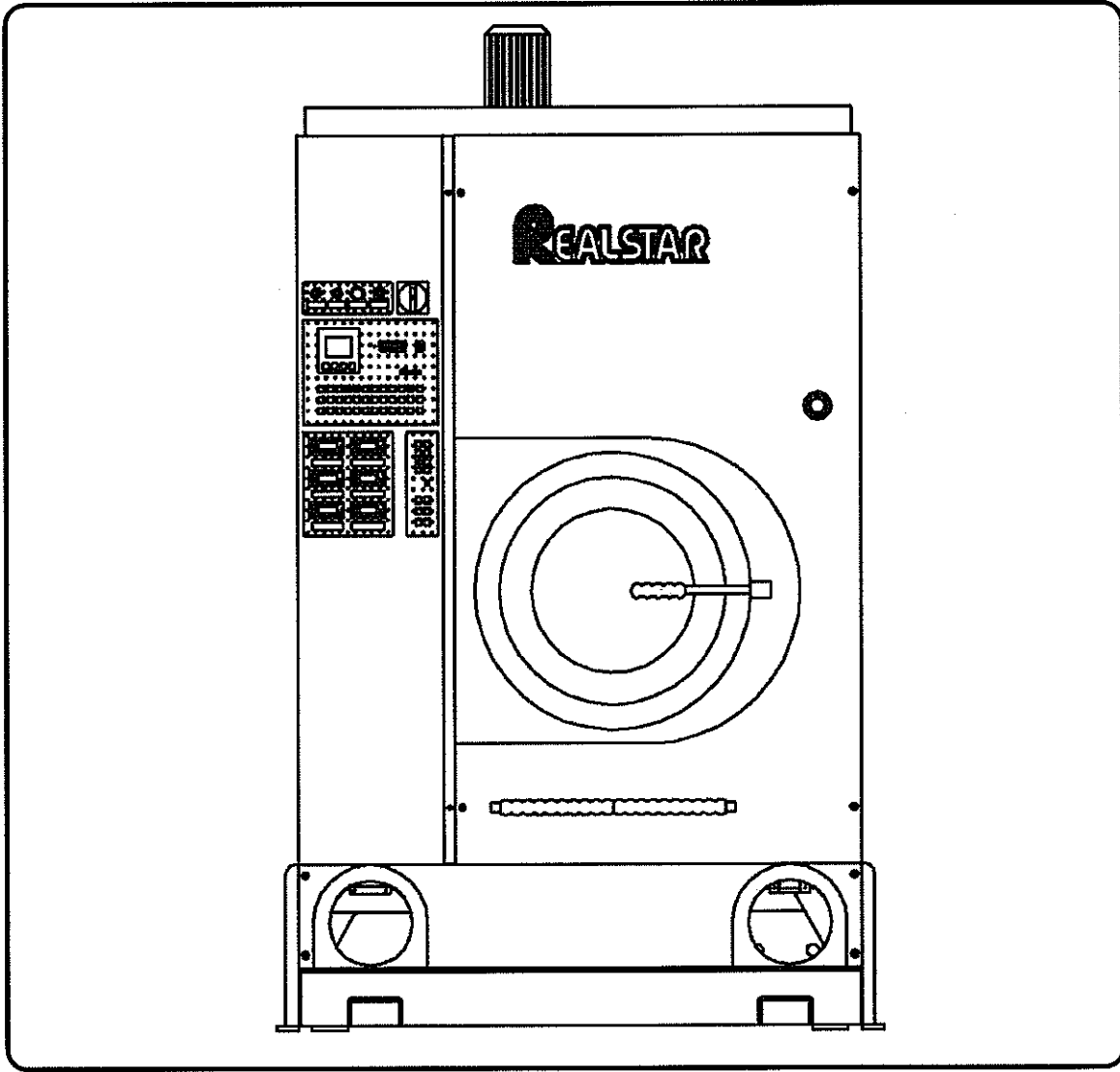




TECHNICAL INFORMATION



T403

WORKING MACHINE WITH SOLVENT:	PERCLORETHILENE	
MACHINE CAPACITY (RATIO 1:20)	Lbs	45 ÷ 50

BASKET

Diameter	inches	39.4
Depth	inches	20
Volume	cu-ft	14.1
Wash speed without Inverter	rpm	33
Extract speed without Inverter	rpm	336
Wash speed with Inverter	rpm	12 ÷ 50
Extract speed with Inverter	rpm	300 ÷ 540
Door opening	inches	20

SOLVENT TANKS

Useful volume tank 1	gal	31.7
Useful volume tank 2	gal	47.6
FLOOR SAFETY TANK CAPACITY	gal	23

DESTILLATOR



Useful volume at half inspection	gal	50.2
Total volume	gal	59.4
Boiler water capacity	gal	4

ELECTRIC POWER

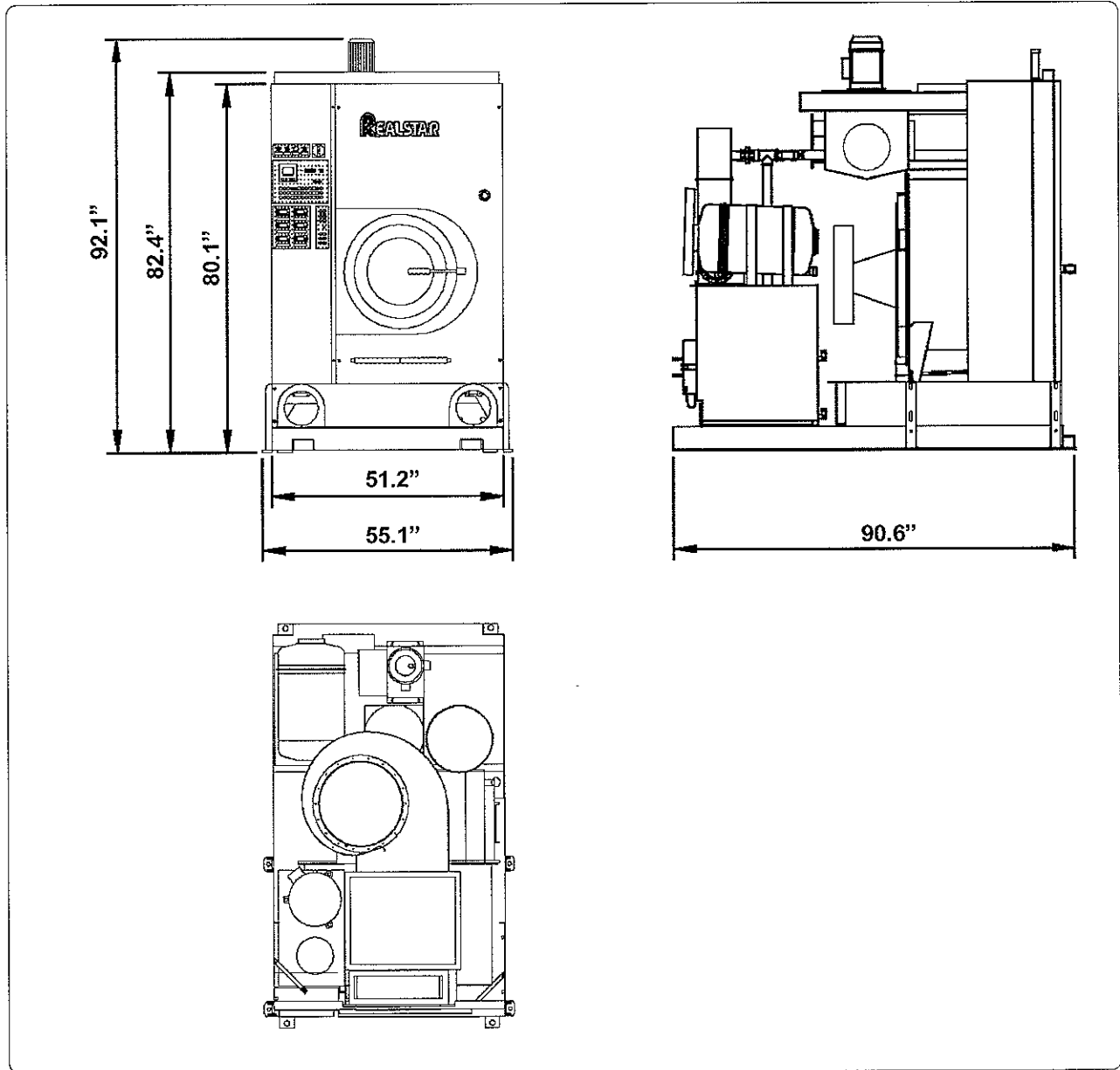
(220 V - 60 Hz)

Wash motor	Hp	1	Kw	0.75
Extract motor	Hp	7.5	Kw	5.5
Solvent pump motor	Hp	1	Kw	0.75
Fan motor	Hp	3	Kw	2.2
Fridge compressor MT65	Hp	5	Kw	3.75
Nylon filter motor	Hp	0.75	Kw	0.55
Still residue pump	Hp	0.75	Kw	0.55
Exhaust fan motor	Hp	0.18	Kw	0.13
Still electric elements	Hp	---	Kw	3 x 3 = 9
Heater electric elements with Turbo Still	Hp	---	Kw	1 x 6 = 6
Air motor compressor	Hp	0.5	Kw	0.37
AIR CLEAN Fan motor	Hp	1	Kw	0.75

NOTE: Acoustic emission level of the machine is lower than 70 dB (A)

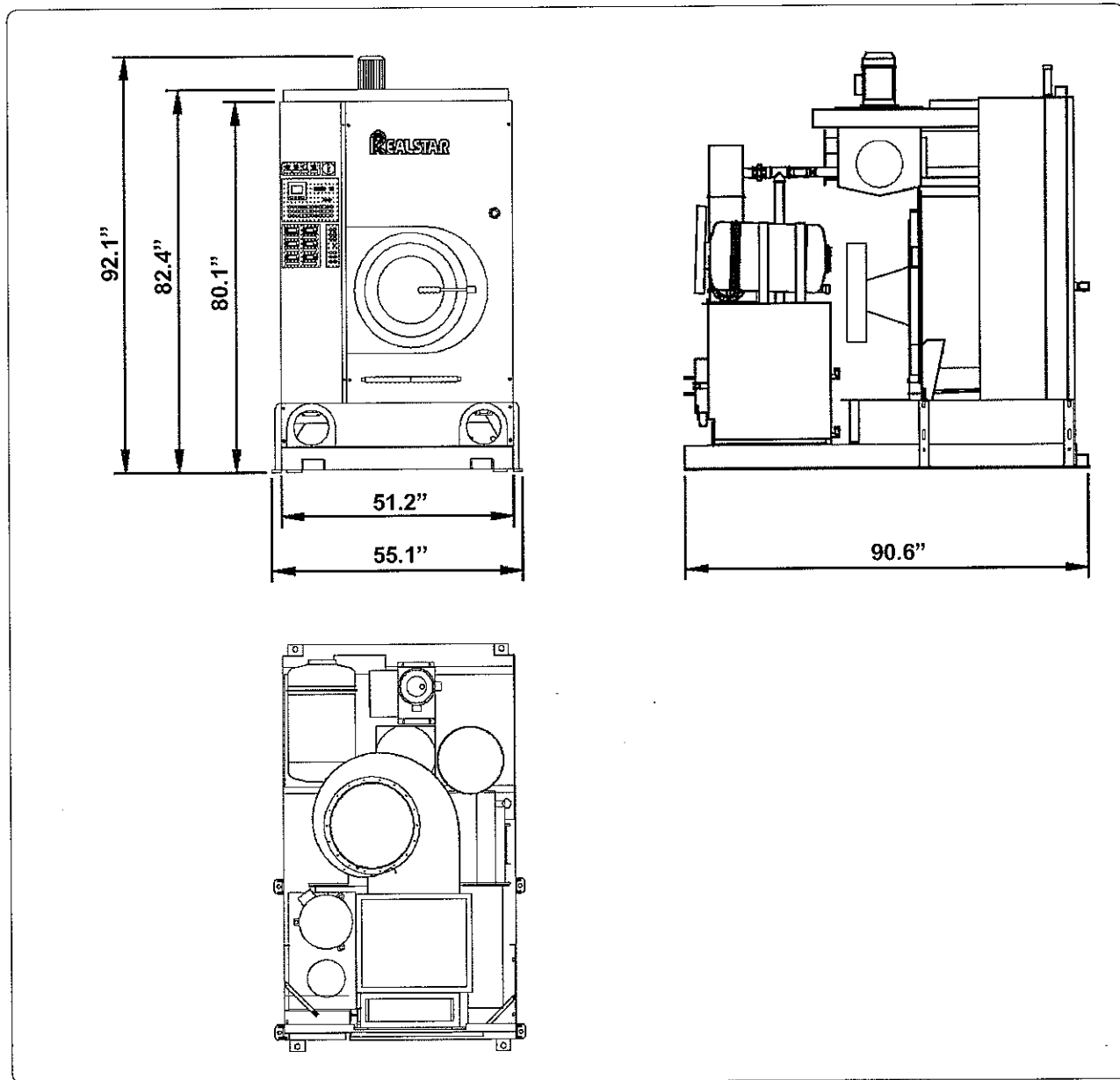
FILTRATION AVAILABLE IN THIS MODEL			
Version	ONE NYLON FILTER		
	Volume nylon filter housing	gal	14.5
	Nylon filter area	ft ²	42
	Filter disks	nr	26
Version	ONE NYLON FILTER AND ONE DECOLORATING FILTER - PR		
	Volume nylon filter housing	gal	14.5
	Nylon filter area	ft ²	42
	Filter disks	nr	26
	PR - Decolorating housing volume	gal	3.4
	PR - Decolorating cartridges	nr	1
	Decolorating cabon quantity	Lbs	4.4

DIMENSIONS AND WEIGHTS - STANDARD Version



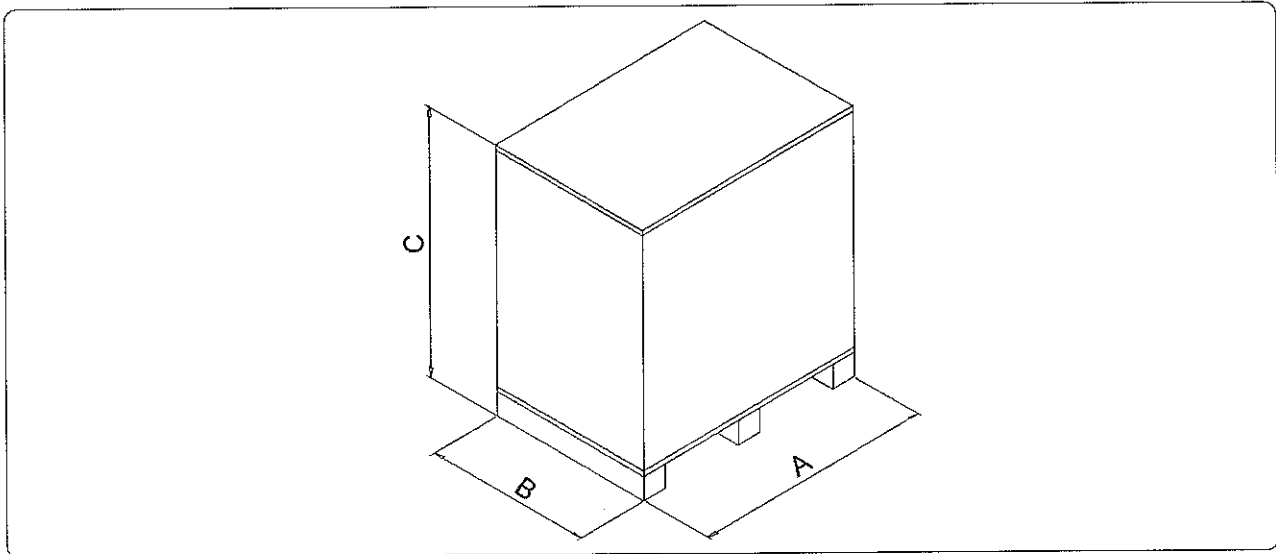
CHARGES		
Empty machine weight	Lbs	3946
Machine weight with solvent	Lbs	5247
Static charge on the floor with solvent	Lbs/ft ²	163
Dynamic charge on the floor (+10%)	Lbs/ft ²	209

DIMENSIONS AND WEIGHTS - Version with AIR CLEAN



CHARGES		
Empty machine weight	Lbs	4210
Machine weight with solvent	Lbs	5511
Static charge on the floor with solvent	Lbs/ft ²	171
Dynamic charge on the floor (+10%)	Lbs/ft ²	264

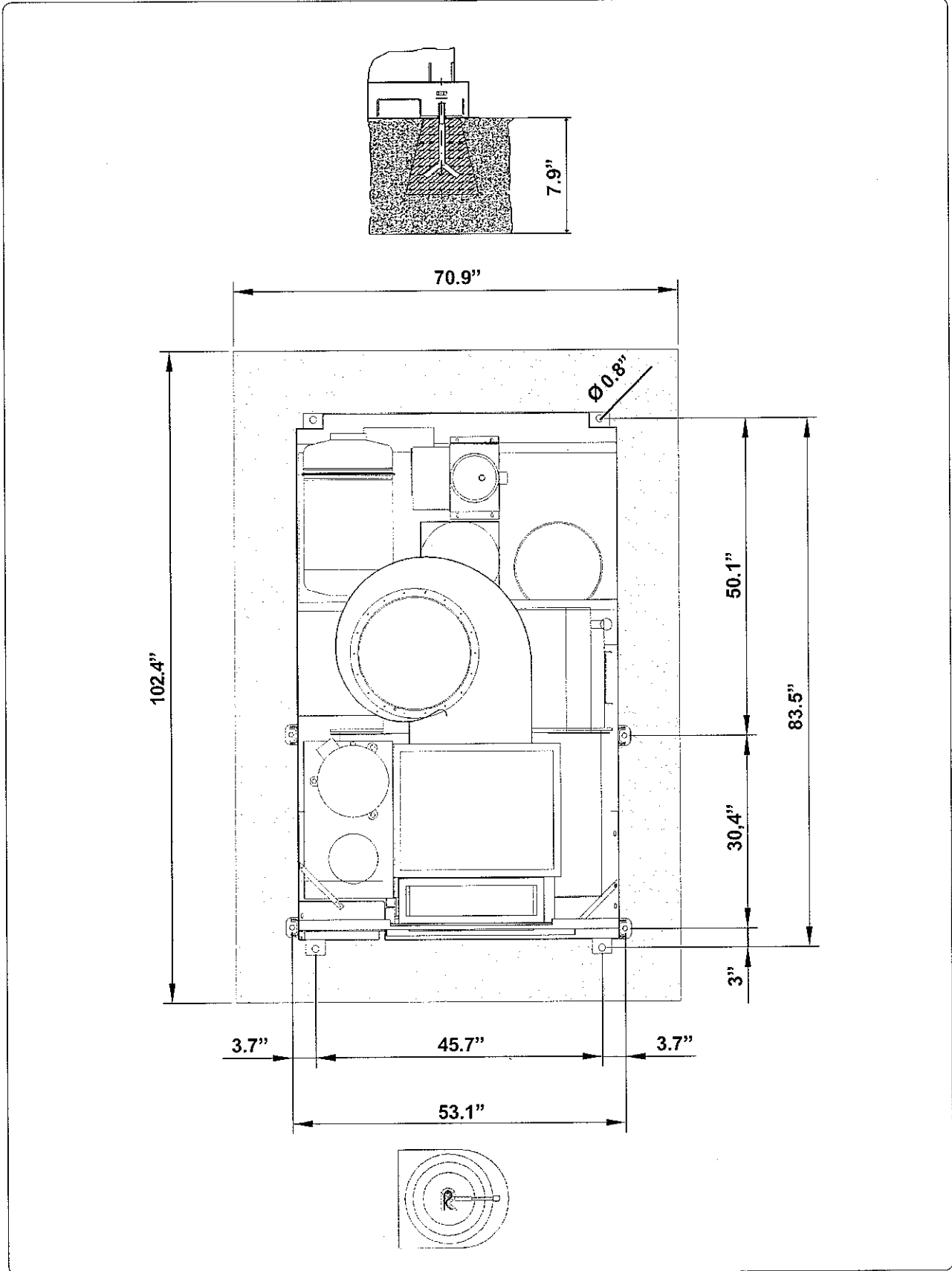
PACKAGED MACHINE DIMENSIONS AND WEIGHTS



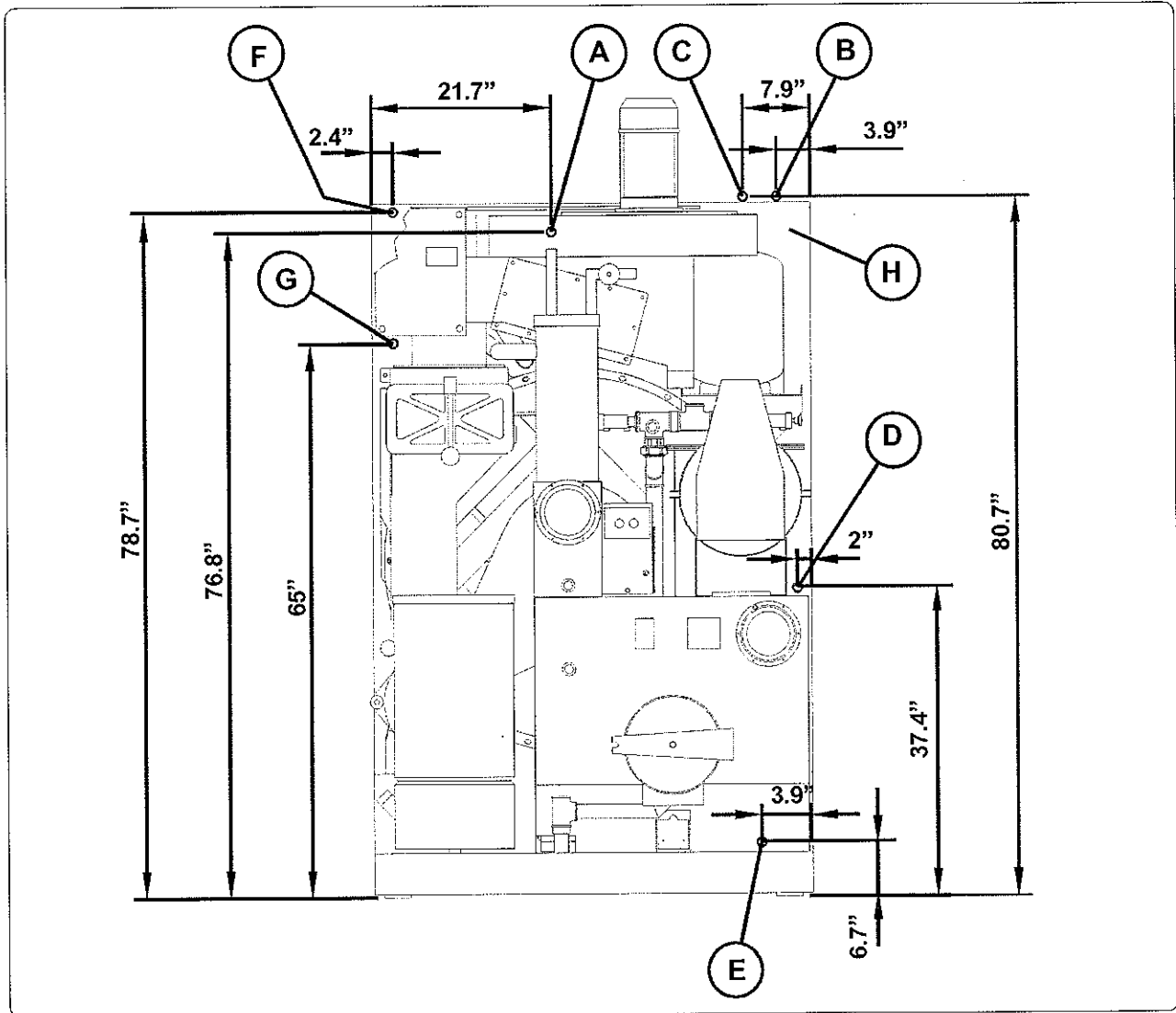
PACKAGED MACHINE DIMENSIONS		
Machine type		
	Carton	Wooden cage
STANDARD	A	inches 89.8
	B	inches 60.6
	C	inches 95.5
+ AIR CLEAN	A	inches 89.8
	B	inches 60.6
	C	inches 95.5

PACKAGED MACHINE WEIGHTS		
Machine type	Carton	Wooden cage
STANDARD		Lbs 4398
+ AIR CLEAN		Lbs 4652

FIXING POINTS



CONNECTIONS



A	Compressed air inlet	mm 6
B	Water inlet	Ø 1"
C	Water outlet	Ø 1"
D	Steam still inlet	Ø 1/2"
E	Condensate still outlet	Ø 1/2"
F	Steam heater inlet	Ø 1/2"
G	Condensate heater outlet	Ø 1/2"
H	Electric connection	

SOLVENT TYPE		PERCHLORETHILENE		
NECESSARY QUANTITY OF SOLVENT TO FILL THE MACHINE				
Machine Version - ONE NYLON FILTER	gal	93.8	Lbs	1256
Machine Version - ONE NYLON F. + ONE DECOLORATING F.	gal	97.7	Lbs	1300

INFORMATION FOR THE ELECTRICAL CONNECTIONS (220 V - 60 Hz)

ELECTRIC Version with DHP (without Inverter)	Kw	-	Amp	-
Dissipated heat	Kw/h	-	Kcal	-
STEAM Version (without Inverter)	Kw	9	Amp	59.5
Dissipated heat	Kw/h	1.89	Kcal	1625

ELECTRIC Version with DHP (with Inverter)	Kw	-	Amp	-
Dissipated heat	Kw/h	-	Kcal	-
STEAM Version (with Inverter)	Kw	-	Amp	-
Dissipated heat	Kw/h	-	Kcal	-

GENERAL INFORMATION		
Required water capacity	gal/min	2.6
Required water pressure	PSI	43 ÷ 72
Required water temperature	°F	64.4 ÷ 73.4
Required air pressure	PSI	101 ÷ 116
Required steam pressure (Steam Version)	PSI	58 ÷ 72
Required steam availability (Steam Version)	Lbs/h	132